



Pollack
and
A Rum Fellow

SP17

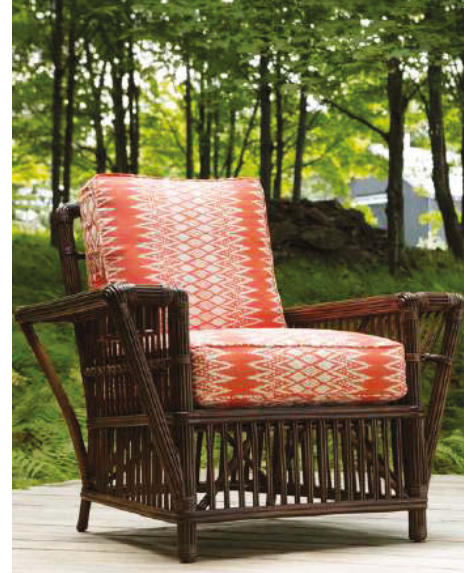
POLLACK

Pollack and A Rum Fellow Indoor | Outdoor Collection

Pattern and color animate Spring 2017's new Indoor + Outdoor fabrics, showcased in five patterns and twenty-five fun and festive colorways. They result from a collaboration between the Pollack Studio and the acclaimed London design firm *A Rum Fellow*, founded by Caroline Lindsell and Dylan O'Shea to promote the vibrant hand-woven textile heritage of the Maya of Central America. Pollack's collection celebrates these intricate geometric motifs and joyful colors, and imbues the fabrics with the durability and versatility that befits our modern lifestyle.



Pollack and A Rum Fellow Indoor | Outdoor Collection, continued



Amaya

This vibrant modern version of traditional Mayan textiles weaves seven colors of weft yarn into horizontal bands, densely patterned with geometric forms. The intricate stitch work is there, along with the familiar stepped edges and strong diagonals that once told the mythic stories of these people; yet the Sunbrella Contract yarns translate the design into a tightly woven, cotton-like cloth, versatile across contract, residential and hospitality venues. Available in five colorways.

Corchal

As if quilted with running stitches that track a broken herringbone design, Corchal's surface randomly pleats in thin horizontal ridges. The short lines are actually woven weft floats, and a double-beam construction, with the top layer of fabric longer than the bottom one, accounts for the pleats between gaps in the motif. The matte Bella Dura yarns and the cotton-like surface they produce add to the appeal of this inviting plain that coordinates with the many exuberant patterns in the collection. Available in six colorways.

Itza

The painstakingly tied and died warps of traditional ikat textiles are simulated in this striking design woven with Bella Dura yarns. In Itza, wide bands cross the fabric, patterned with rows of diamonds and zigzags, all edged with the feathery lines that define the hand-woven inspiration. Available in six colorways.

Mazate

Bold graphics, scale, yarn and color distinguish this Indoor + Outdoor textile. In all colorways, a fresh white warp is crossed by two alternating weft yarns that draw the diamond motif. Solid, clear color brings a welcome simplicity to the intricate graphic. Available in four colorways.

Tacana

Like a kaleidoscope crammed with brilliant tones and precise shapes, Tacana is a lavish, color-saturated mosaic. Sunbrella Contract yarns in a variety of weaves create the eight weft and two warp colors in each complex palette. Diagonals rule in this design, segmenting horizontal stripes into a larger pattern of finely outlined diamonds, while a framework of wide twill-striped bands organizes the smaller elements within strings of interlocking diamonds. With an inviting, cotton-like hand, this substantial cloth is a skillful commercial interpretation of traditional hand weaving. Available in four colorways.

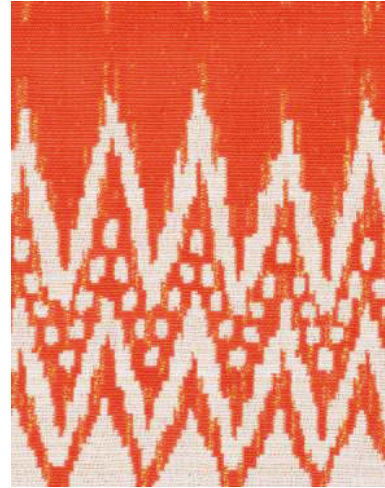
Pollack and A Rum Fellow Indoor | Outdoor Collection, continued



Amaya 2429/02 guava



Corchal 2431/03 guava





Itza 2430/04 guava



Mazate 2428/02 guava



Tacana 2427/02 guava

Catalogue #	Fabric Name	Colors	Fiber Content	Width	Notes
2429	AMAYA	5	Acrylic, solution-dyed/Polyester, solution-dyed	55"	Indoor + Outdoor / High performance/bleach cleanable / 
2431	CORCHAL	6	Polyolefin, solution-dyed	55"	Indoor + Outdoor / Bleach cleanable
2430	ITZA	6	Polyolefin, solution-dyed	55"	Indoor + Outdoor / Bleach cleanable
2428	MAZATE	4	Polypropylene	54"	Indoor + Outdoor
2427	TACANA	4	Acrylic, solution-dyed/Polyester, solution-dyed	55"	Indoor + Outdoor / High performance/bleach cleanable / 

POLLACK



AMFIELD



INDOOR | OUTDOOR
Amaya 2429

POLLACK



ALTFIELD

INDOOR | OUTDOOR
Tacana 2427

POLLACK


ALTFIELD



The Pollack and A Rum Fellow collection

POLLACK


ALTFIELD



The Pollack and A Rum Fellow collection

POLLACK


ALTFIELD



The Pollack and A Rum Fellow collection

POLLACK



ALTFIELD



The Pollack and A Rum Fellow collection

Altfeld Ltd. 2/22 Design Centre Chelsea Harbour, Lots Road, London SW10 0XE
Tel: +44 (0)20 7351 5893 Email: showroom@altfield.com www.altfield.com

POLLACK



ALTFIELD



The Pollack and A Rum Fellow collection

Altfield Ltd. 2/22 Design Centre Chelsea Harbour, Lots Road, London SW10 0XE
Tel: +44 (0)20 7351 5893 Email: showroom@altfield.com www.altfield.com

POLLACK


ALTFIELD



The Pollack and A Rum Fellow collection

POLLACK


ALTFIELD



The Pollack and A Rum Fellow collection

Altfield Ltd. 2/22 Design Centre Chelsea Harbour, Lots Road, London SW10 0XE
Tel: +44 (0)20 7351 5893 Email: showroom@altfield.com www.altfield.com



The Pollack and A Rum Fellow collection



The Pollack and A Rum Fellow collection

POLLACK


ALTFIELD



The Pollack and A Rum Fellow collection

POLLACK


ALTFIELD



The Pollack and A Rum Fellow collection

About the Designers

Rachel Doriss



The Pollack Design Studio is helmed by VP and design director Rachel Doriss, who joined the company as a designer under founder Mark Pollack in 2000. Today, she oversees the in-house design team, which includes Chase Taylor, Jenia Myagkov and Molly Haynes; she also regularly develops design collaborations with artists both inside and outside of the interiors industry.

The Pollack Studio approaches textile design from various perspectives. Inspiration might come from a particular yarn, a new manufacturing technique or process, a weave structure that the studio develops on a handloom, a market need or an original artwork.

The Pollack Studio has always believed in the value of drawing with a pencil rather than a computer mouse; putting pencil to paper expresses a uniquely personal hand, and the majority of Pollack's patterns begin as hand-drawn sketches.

A Rum Fellow

A Rum Fellow is a London based design studio dedicated to artisan textiles and creating statement interior pieces. Creating a fine balance of contemporary and heritage design infused into collections that will captivate the room.

A Rum Fellow was founded by Caroline Lindsell and Dylan O'Shea, a partnership that fuses a desire for beautifully crafted and well-travelled design befitting their contemporary lifestyle. In the spirit of the intrepid British explorers, Lindsell and O'Shea traverse the globe in search of the wonderful and unique. They periodically introduce collections inspired by an explored country, taking in that region's finest traditional design and translating it into their own uncommon style.



For further information please contact:

Tel: +44 (0)20 7351 5893 or Email: showroom@altfield.com