



18th & 19th Century  
Antique Chinese Furniture  
& Accessories

All Price shown are Retail including VAT

# Storage

The development of the chair orientated the domestic Chinese interior from the horizontal orientation of a mat based culture like Japan to a more vertical one. The resulting development of cabinets and coffer are as useful to us today as they were when they were made, and come in a wide variety of sizes from massive and dramatic compound cabinets, perfect as statement pieces in a drawing room or dining room to smaller low cabinets suitable for bedsides and everything in-between.



## A Pair of Square Corner Cabinets

A pair of very fine square corner cabinets. Fitted with a pair of panelled doors which sit above a wide plain panel and a plain apron, standing on square legs.

Northern Elmwood (*yumu*) | Shanxi Province, China | Early 18th Century.

W: 110cm (46.5") | D: 61cm (24") | H: 193cm (76")

ANT 35984/85 | Price £6500



## A Pair of Compound Cabinets

A pair of compound cabinets (*dasijiangui*) of rectangular form. The doors are from matching wood cut from a single timber fitted flush to the frame. At the bottom of the cabinets is a shaped and well carved apron with entwined, vigorous branches. The interior is fitted with two internal drawers and a single camphor wood shelf, at the base of the cabinet is a removable panel concealing a hidden storage space. The hat box is also fitted with an internal shelf.

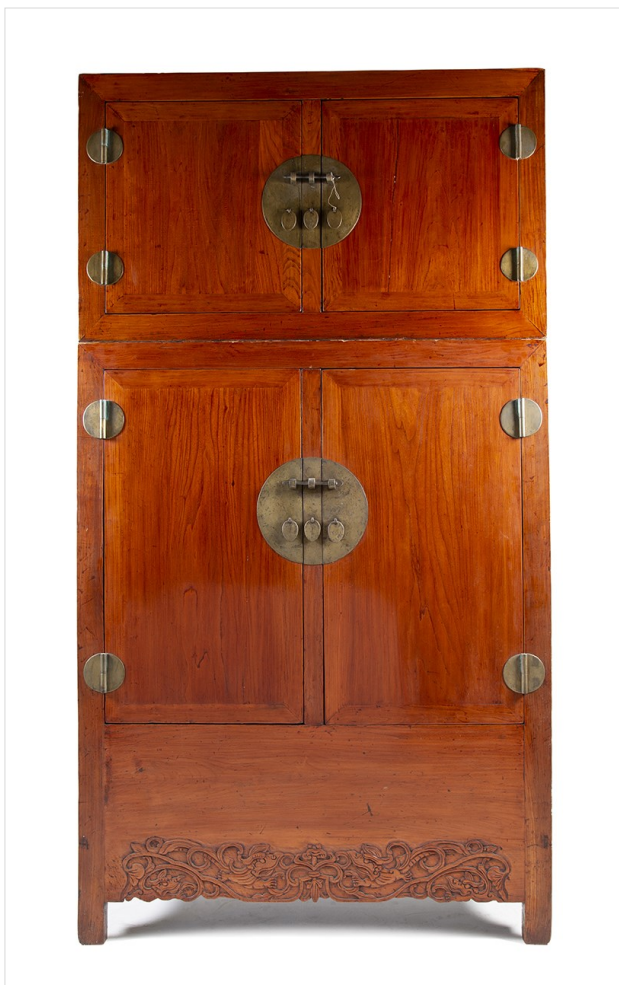
Northern Elmwood (*yumu*)

Turn 18th/19th Century

Hebei Province, China

W: 95cm (37.5") | D: 46cm (18") | H: 231cm (91")

ANT 37788/89 | Price £9500



## A Large Compound Cabinet

A large single compound cabinet (*dasijiangui*) of rectangular form, with flush fitting doors to the frame. The apron shaped and well carved with entwined vigorous branches. The interior of the 'hat box' is fitted with a single shelf, the lower section with 2 shelves, one with a pair of drawers, the other a removable panel concealing a hidden storage space.

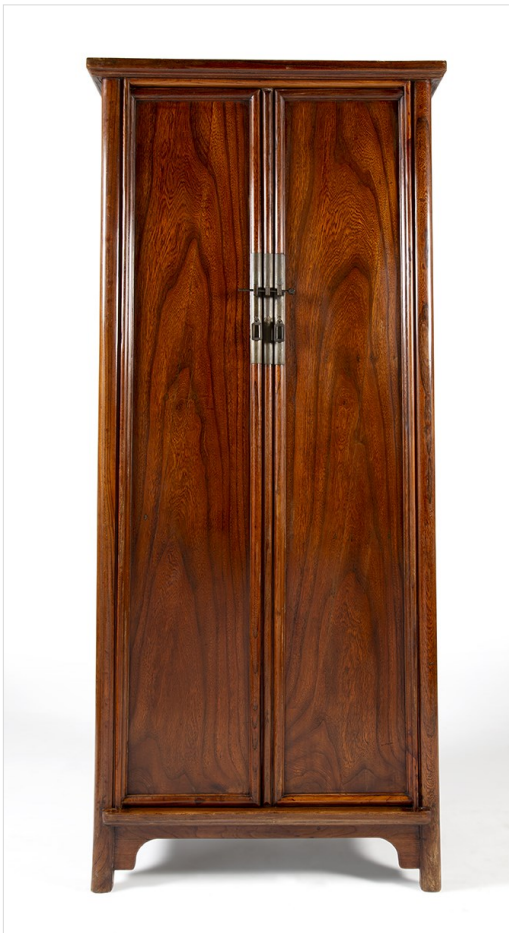
Northern Elmwood (*yumu*)

19th Century

Hebei Province, China

W: 140cm (55") | D: 56cm (22") | H: 259cm (102")

ANT 24711 | Price £3950



## A Single Oak Cabinet

A rare and unusual oak cabinet: a tall slim round corner cabinet with well figured matched grain on the doors.

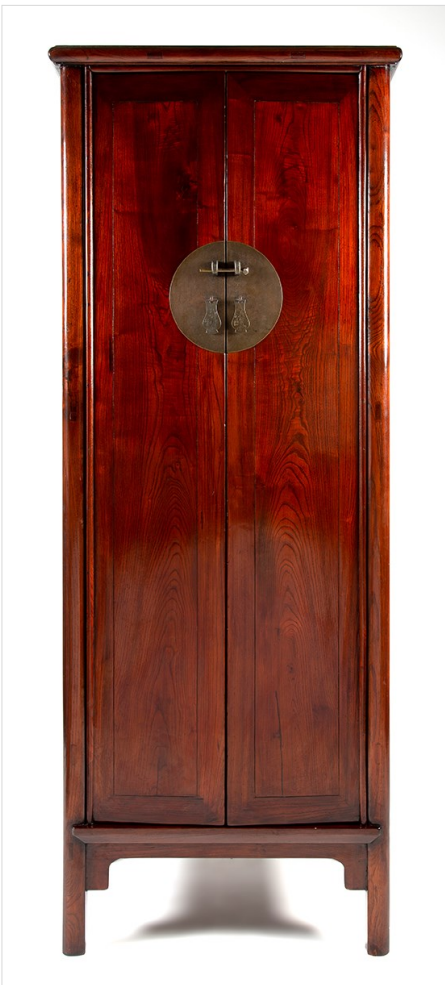
Oak (*zuomu*)

Turn 18th/19th Century

Shandong Province, China.

W: 31 inches|79cm | D: 20 inches|51cm | H: 76 inches|193cm

ANT 26560 | Price £3800



## A Tall Slim Elmwood Cabinet

A tall, slim, straight sided round corner cabinet (*yuanjiagui*). The cabinet cap sits above a pair of full length doors standing on round legs connected by a slim apron.

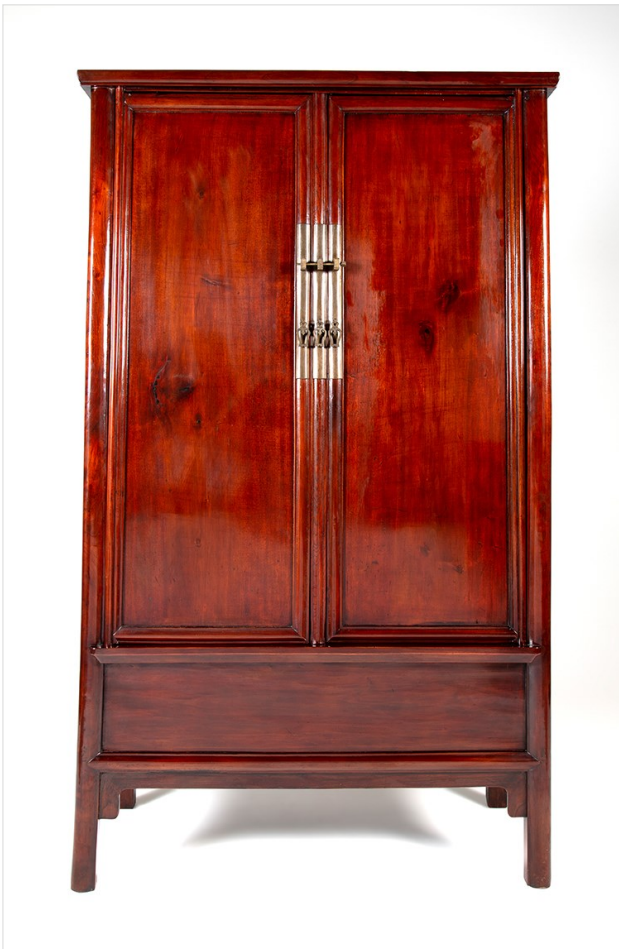
19th Century

Northern Elmwood (*yumu*)

Shandong Province, China

W: 76cm (30") | D: 63.5cm (25") | H: 195.5cm (77")

ANT 41448 | **SOLD**



## A Single Round Corner Cabinet

A round corner cabinet (*yuanjiaogu*). The square-cornered top frame supported on square-section posts enclosing a pair of well-figured door panels and a central removable stile, above an inset horizontal lower panel and the plain apron, the sides with conforming inset panels.

Southern Elmwood (*jumu*)

Late 18th Century

Suzhou Province, China.

W: 109cm (43") | D: 51cm (20") | H: 185.5cm (73")

ANT 40614 | Price £2400

## A Round Corner Display Cabinet

A round corner display cabinet (*lianggegui*) of slightly tapering form, the rounded stiles supporting an open shelf, the top rails with a curvilinear beaded apron and sprandrels continuing down to meet the frame above 2 panelled doors, the interior fitted with a 2 drawer shelf, standing on rounded legs joined by a beaded cusped apron.

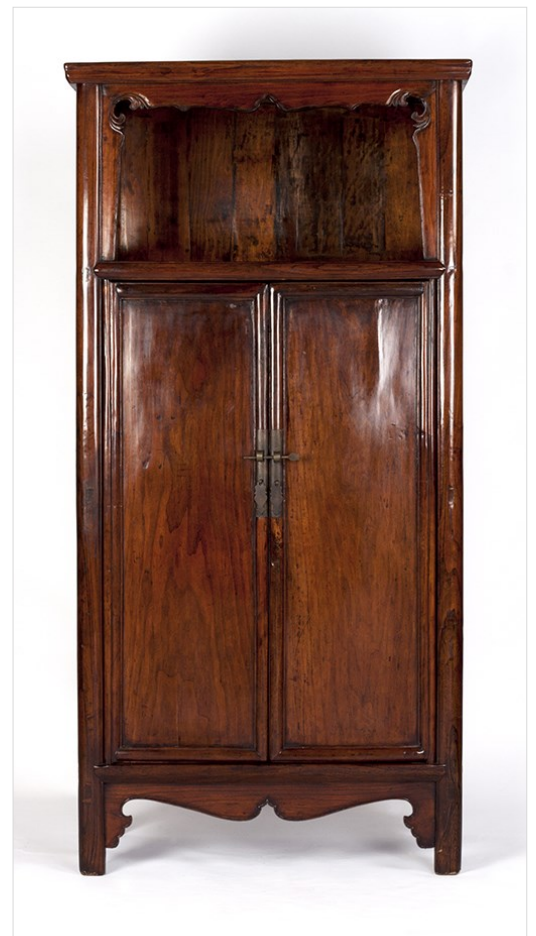
Northern Elmwood (*yumu*)

Turn 18th/19th Century,

Shanxi Province, China

W: 79cm (31") | D: 47cm (18.5") | H: 159cm (62.5")

ANT 30355 | Price £2200





## A Small 5 Drawer Coffer

A small 5 drawer coffer. The top panel with iceplate edge above the sectioned front with 5 carved drawers flanked by 2 carved wing panels. The lower section under the drawers with 2 doors and the interior fitted with a single shelf.

Walnut (*hetao mu*) | Turn 18th/19th Century, | Shanxi Province, China

W: 132cm (52") | D: 53cm (21") | H: 99cm (39")

ANT 28227 | Price £2200



## A Small 3 Drawer Coffer

A small 3 drawer coffer. The top panel with iceplate edge above the sectioned front with 3 carved drawers flanked by 2 carved wing panels. The lower section under the drawers with 2 doors and the interior fitted with a single shelf over a plain apron

Walnut (*hetao mu*) | Turn 18th/19th Century, | Hebei Province, China

W: 158cm (62") | D: 61cm (25") | H: 89cm (35")

ANT 34693 | Price £2200



## A Large Square Corner Low Cabinet

A massive square corner low cabinet with well figured grain emphasised by the plain front with a pair of centre doors opening to a single shelf, above a series of 3 drawers and the piece standing on legs ending on short cabriole 'leopard feet'.

Walnut (*hetao mu*) | 18th Century | Gansu Province, China

W: 178cm (70") | D: 65cm (25.5") | H: 137cm (54")

ANT 35411 | Price £3200



## Three Drawer Kang Coffe

A low 3 drawer kang coffer with carved spandrels, and carved drawer fronts over carved panels above the carved and shaped apron connected to leopard legs.

Northern Elmwood (*yumu*) | Early 18th Century, | Shanxi Province, China

W: 170cm (67") | D: 70cm (27.5") | H: 52cm (20.5")

ANT 30782 | Price £2500

# Stools & Day Beds

Stools can be found from basic rustic rural items to refined seats in the Literati taste. Seating was often used in a hierarchical matter, husband and wife in chairs and maybe eldest and favoured sons, the rest if allowed to sit were on stools. Today we use the stools for bedside tables and end tables.

Daybeds are raised platforms for more relaxed seating while reading, eating with friends or a snooze. Today they make great coffee tables, often they are cut down in size to fit into modern interiors.



## Fretwork Screen Daybed

A flush sided three-panelled fretwork screen bed (*sanpingfengshi*) of flush side form with beaded apron and legs, the slightly tapering legs ending in hoof feet.

Northern Elmwood (*yumu*)

18th Century

Shanxi Province, China

W: 218.5cm (86") | D: 122cm (48") | H: 48cm (19") top of bed / 85cm (33.5") top of fretwork panels

ANT 26538 Price £4950



## A Plank Top Coffee Table

A contemporary reproduction coffee table made from re-claimed elm wood.

Northern Elmwood (*yumu*) |  
Reproduction | China  
W: 160cm (63") | D: 77.5cm  
(30.5") | H: 38.5cm (15")

ALT-F000 | Price £1600



## A Low Square K'ang Table

A low square k'ang table with inlaid marquetry top and standing on short cabriole legs.

Elmwood and Cypress (*yumu & baimu*)  
Early 19th Century  
Mongolia

W: 71cm (28")  
D: 71cm (28")  
H: 25cm (10")

ANT 33594 | Price £950

## A Low Square K'ang Table

A low square k'ang table with inlaid marquetry top and standing on short cabriole legs.

Elmwood and Cypress (*yumu & baimu*)  
Early 19th Century  
Mongolia

W: 71cm (28")  
D: 71cm (28")  
H: 25cm (10")

ANT 33595 | **SOLD**

# Tables

With chairs come tables, from square tables to eat at to long altar tables, side table to stands for display or small k'ang tables for daybeds. The choice of sizes and shapes are huge, and an elegant table in an entrance hall or behind a sofa are fabulous examples of their modern utility.



## A Half Moon Table

A half moon table with solid wood top and 'ice plate' edge frame above a narrow waist and curved cusped apron. The table stands on four sinuous cabriole legs ending in carved leaf pattern feet set on shaped pads.

Locust wood (Scholars tree) (*huaimu*) | 18th Century | Hebei Province, China

W: 124.5cm (49") | D: 62cm (24.5") | H: 84cm (33")

ANT 37323 | Price £2200



## Pedestal Table

A pedestal table with a massive solid wood top, standing on 2 square pedestals with carved panels on 3 sides, each pedestal with a carved panel disguising a drawer. The square legs with open panels above a carved apron.

Northern Elmwood (*yumu*) | Henan Province, China | Turn 18th/19th Century

W: 208cm (82") | D: 42cm (16.5") | H: 91.5cm (36")

ANT 26762 | Price £2800



## Plank Sided Table

A flush sided table. The base of the plank sides are cusped to create four small feet.

Northern Elmwood (*yumu*)

19th Century

Shanxi Province, China

W: 146cm (57.5")

D: 36cm (14")

H: 86.5cm (34")

ANT 41411 | **SOLD**



## Large Walnut Alter Table

A late 17th Century side table with everted flanged ends and beaded apron and carved Double ruyi sceptre apron head spandrels and sword beaded legs with open leg panels

Walnut (*hetao mu*) | Late 17th Century | Shanxi Province, China

W: 274cm (108") | D: 48.5cm (19") | H: 86.5cm (34")

ANT 32625 | Price £4500



## A Large Plank Top Alter Table

A large recessed leg plank top altar table, with a beaded apron and carved apron head spandrels, supported on ribbed trestle legs with an open panel ending in solid shoe feet.

Northern Elmwood (*yumu*) | Early 18th Century | Shanxi Province, China.

W: 200.5cm (79") | D: 56cm (22") | H: 90cm (35.5")

ANT 40892 | Price £3950



## A Massive Black Lacquer Alter Table

A massive recessed leg alter table with Black Lacquer Alter Table

Black Lacquer over Northern Elmwood (*yumu*) | 18th Century | Shanxi Province, China

W: 321cm | D: 47cm | H: 87cm (table top)/94cm (top of Flanges)

ANT 27123 | Price £ 3500



## Reg Lacquer Cabriole Leg Table

A contemporary cabriole leg red lacquer table, with ice plate edge top frame above a wide apron with beaded open lozenges. The cabriole legs end in scroll feet.

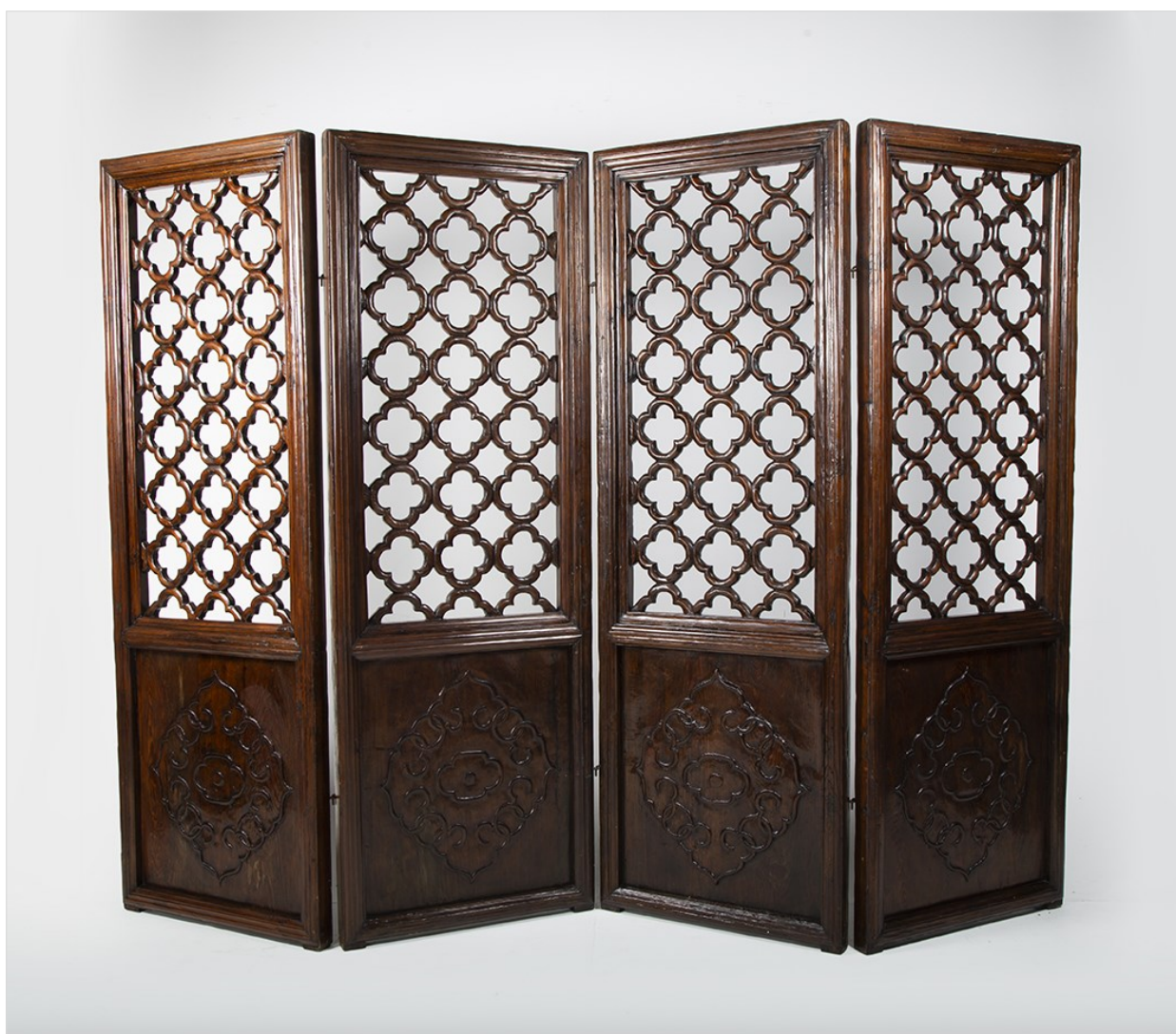
16th 17th Century Style

W: 170cm (67") | D: 70.5cm (27.75") | H: 84.5cm (33.25")

ANT 35797 | Price £2500

# Accessories & Fretwork Panels

We have a small selection of interesting accessories from pots, stone Foo Dogs to architectural details, including fretwork panels; Ancient Chinese homes had to contend with extremes of heat and cold, the fretwork panels allowing breezes in the summer to cool and the open panels were blocked with paper or fabric in the winter to block them. The fretwork panels also gave illusions of privacy and shade. Today they make a dramatic back drop and are often converted into room dividers. Smaller window panels make interesting statement pieces behind beds or indeed anywhere on the walls.



## A Large Four Panel Fretwork Screen

A four panel fretwork screen with geometric fretwork over bas relief carved medallion in the low solid panel

Northern Elmwood (*yumu*) | 18th Century | Shanxi Province, China

W: 288cm (113") | D: 7.5cm (3") | H: 212cm (83.5")

ANT 28949 | Price £3600

Altfield Ltd, Design Centre Chelsea Harbour, Lots Road, London, SW10 0XE

Tel: (00) +44 (0)207 351 5893 | Email: [showroom@altfield.com](mailto:showroom@altfield.com) | [www.altfield.com](http://www.altfield.com)



## A Four Panel Fretwork Screen

A four panel fretwork screen with a geometric fretwork design with central motif with a relief carved panel above a reticulated carved panel below, all of which sit above plain solid panels.

Turn 18th/19th Century | Zhejiang Province, China

W: 234cm (92") | H: 277 (109")

ANT 33892 | Price £2800



## A Four Panel Fretwork Screen

A four panel fretwork screen with geometric 'cracked ice' fretwork design with reticulated carved panels above and relief carved panels below over a plain solid panel. The screen comprises of two central double panels and two outer single panels.

Northern Elmwood (*yumu*) | Turn 18th/19th Century | Shanxi Province, China

W: 204cm (82") | D: 5.5cm (2.5") | H: 229 (90.5")

ANT 32827 | Price £3750

Altfield Ltd, Design Centre Chelsea Harbour, Lots Road, London, SW10 0XE

Tel: (00) +44 (0)207 351 5893 | Email: [showroom@altfield.com](mailto:showroom@altfield.com) | [www.altfield.com](http://www.altfield.com)



## A Set of Four Geometric Panels

A set of four panels. Open fretwork panels sit above carved relief panels below depicting a large bas-relief floral motif.

Norther Elmwood (*yumu*)

19th Century

Zhejiang Province, China

W: 132cm (52")

D: 4cm (1.5")

H: 140cm (55.5")

ANT 31885 | Price £2400



## Pair of Geometric Panels

A pair of small rectangular fretwork panels.

Cypress wood

19th Century

Shanxi Province, China

W: 42cm (16.5")

H: 68.5cm (27")

ANT 33690/91 | Price £700



## A Set of Carved Fretwork Panels

A pair of carved and detailed fretwork panels with mythical creatures surrounding a Daoist Luohan in the central panel.

Northern Elmwood

18th Century

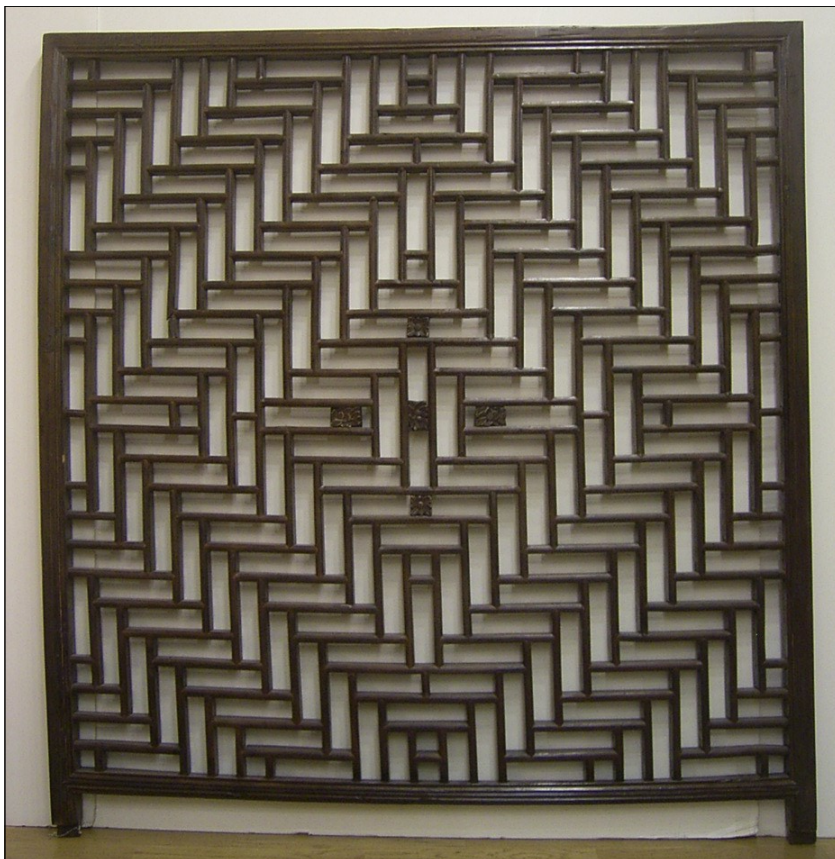
Shanxi Province

W: 24.5 inches 62cm

D: 1.5 inches 3.5cm

H: 59 inches 150cm

ANT 31885 | Price £2400



## Fretwork Panel

A single fretwork window panel

Cypress wood

19th Century

Ningbo Region, Zhejiang Province, China

W: 103cm (40.5") | H: 108.5cm (42.75")

ANT 32840 | Price £350



## Geometric Fretwork Panels

A set of four little geometric fretworks

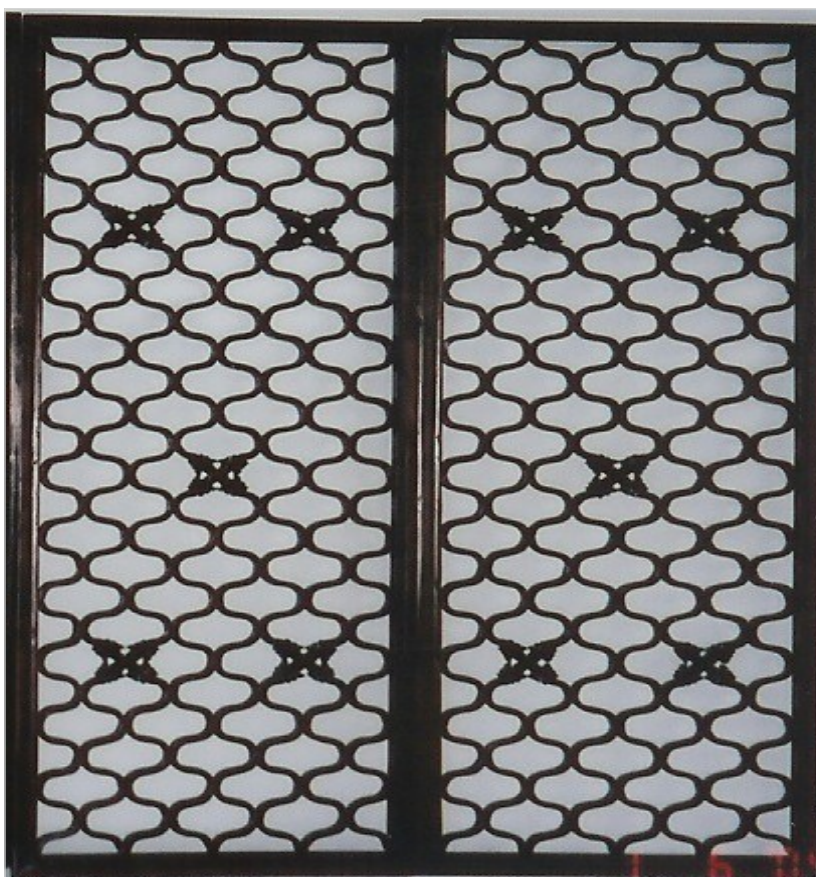
Cypress wood

19th Century

Shanxi Province, China

W: 43cm (17") | H: 87.5cm (34.5")

ANT 33741 | Price £1100



## Pair of Geometric Panels

A pair of geometric panels with auspicious Buddhist symbol fretwork pattern

Southern Elmwood

Late 18th Century

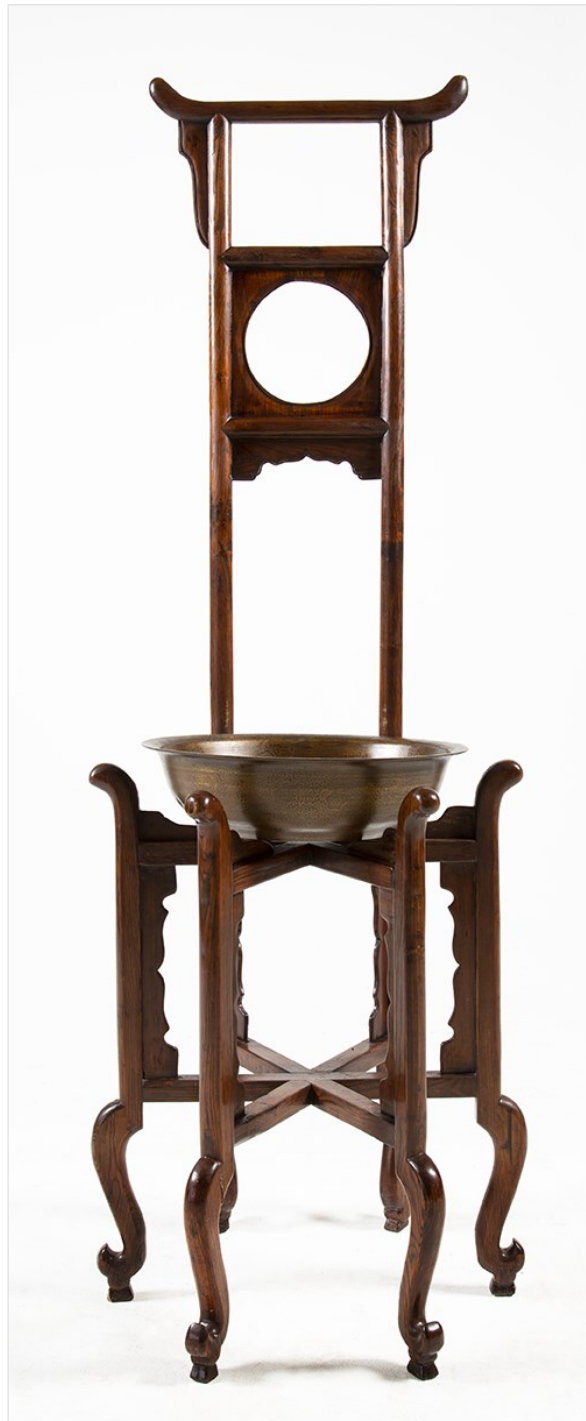
Shanxi Province, China

W: 47cm (18.5") | H: 120cm (47")

ANT 36597 | Price £900

Altfield Ltd, Design Centre Chelsea Harbour, Lots Road, London, SW10 0XE

Tel: (00) +44 (0)207 351 5893 | Email: [showroom@altfield.com](mailto:showroom@altfield.com) | [www.altfield.com](http://www.altfield.com)



## Wash Basin and Stand

An elmwood wash basin stand with 6 flared legs supporting the new inlaid bronze basin

Northern Elmwood (*yumu*)

19th Century

Hebei Province, China

W: 51cm (20") | D: 51cm (20") | H: 145cm (57")

ANT 33406 | Price £ 1100

Altfield Ltd, Design Centre Chelsea Harbour, Lots Road, London, SW10 0XE

Tel: (00) +44 (0)207 351 5893 | Email: [showroom@altfield.com](mailto:showroom@altfield.com) | [www.altfield.com](http://www.altfield.com)



## A Pair of Roof Corbels

A pair of roof Corbels "*dugong*". These would have sat on the top of a pillar heads or walls to supporting a roof beam and carry the weight of the eaves. With a piece of glass on top they would make an excellent coffee table.

Possibly Oak | Jingsu Province, China | 17th Century

W 162.5cm (64") | D 13cm (5") | H 66cm (26")

ANT 34481/82 | Price £1600



## Calligraphy Panel

A calligraphy panel with black lacquer background and gold painted character  
Would have been used above a door way into a Scholars retreat

18th/19th Century | Shanxi Province, China

H 25 inches 63.5cm

ANT 35981 | £850



## Granite Buddha Head

A contemporary granite stone Buddha head

H: (17")

ANT 33728 | Price £850



## Stone Foo Dogs

A pair of stone Foo Dogs. Traditionally used as guardians of doors to prevent the entrance of evil spirits.

Granite | 17th/18th Century | Shanxi Province, China

H: 29.5cm (11.5")

ANT 33834/35 | Price £750 pair



## Stone Salt Weight

A Stone Salt Weight.

Winter Melon | 17th Century | Shanxi Province, China

D: 20cm (8") | W: 30.5cm (12")

ANT 32763F | Price £295